



RE/MAX
Elite



14 Netley Way, Walsall, WS3 2RD

£165,000

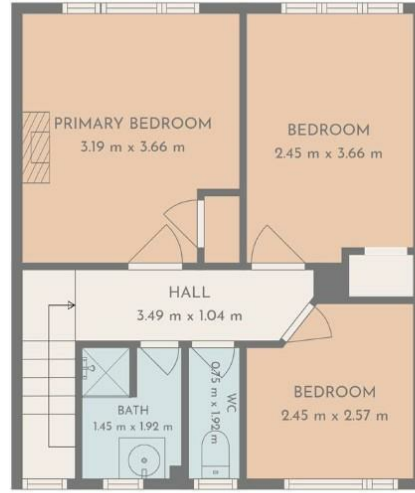
THREE BEDROOM TERRACED HOME WITH EXCELLENT POTENTIAL IN WS3

This three-bedroom terraced property is ideal for first-time buyers, families or investors looking for a home with excellent scope to add value. The property benefits from a spacious lounge, kitchen, conservatory, downstairs WC, shower room, three bedrooms and established gardens to the front and rear. While some updating is required, the property offers a brilliant canvas in a popular residential location.

Floor Plan



Ground floor



1st floor

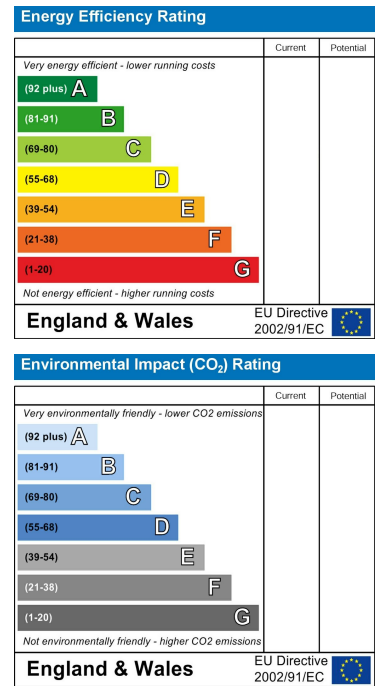
TOTAL: 89 m2
 Ground floor: 50 m2, 1st floor: 39 m2
 EXCLUDED AREAS: WALLS: 9 m2

FLOOR PLAN CREATED BY CUBICASA APP. MEASUREMENTS DEEMED HIGHLY RELIABLE BUT NOT GUARANTEED.

Area Map



Energy Efficiency Graph



These particulars, whilst believed to be accurate are set out as a general outline only for guidance and do not constitute any part of an offer or contract. Intending purchasers should not rely on them as statements of representation of fact, but must satisfy themselves by inspection or otherwise as to their accuracy. No person in this firm's employment has the authority to make or give any representation or warranty in respect of the property.